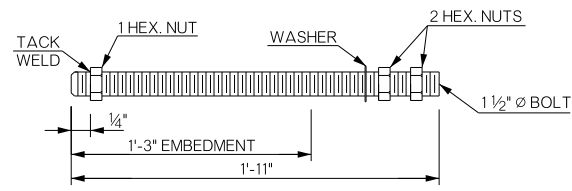
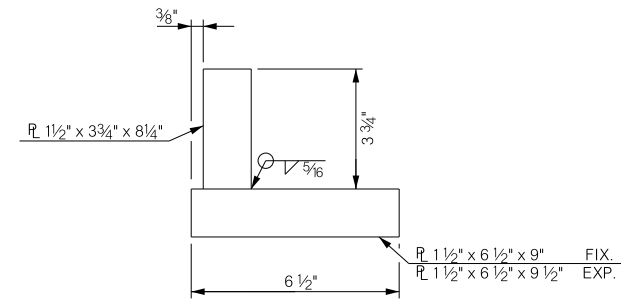


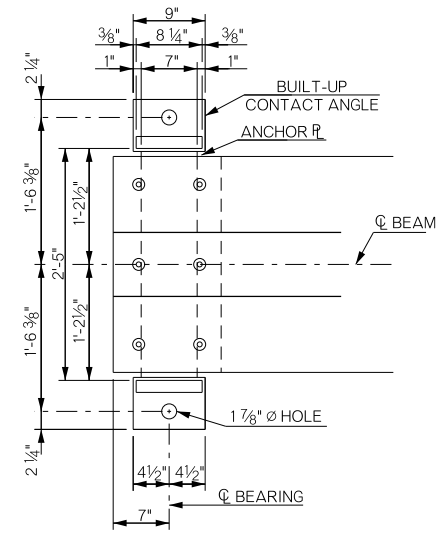
REVISIONS		
REV. NO.	DESCRIPTION	DATE



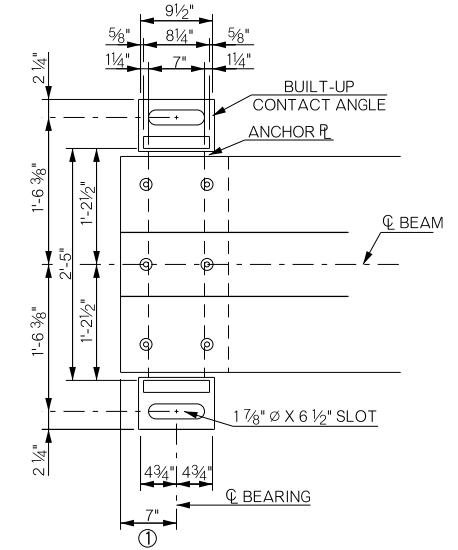
ANCHOR BOLT DETAIL



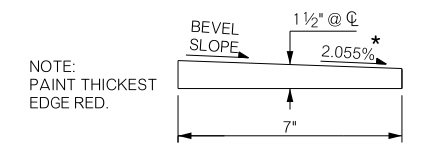
BUILT-UP CONTACT ANGLE DETAIL



FIXED BEARING PLAN



EXPANSION BEARING PLAN

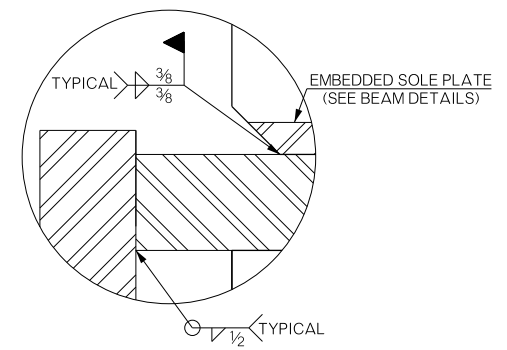


BEVELED ANCHOR PLATE DETAIL

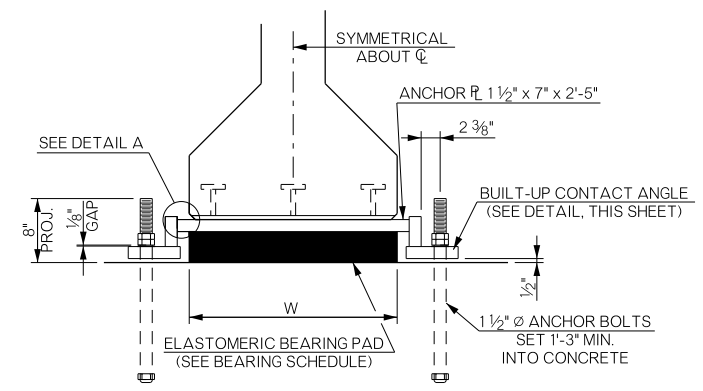
NOTE: PAINT THICKEST EDGE RED.

NOTE: BEVELED ANCHOR PLATE IS REQUIRED WHEN ANGLE BETWEEN BEAM SUPPORTS DUE TO ROADWAY GRADE EXCEEDS 1%. BEVEL SLOPE TO MATCH ANGLE BETWEEN BEAM SUPPORTS AND HORIZONTAL.

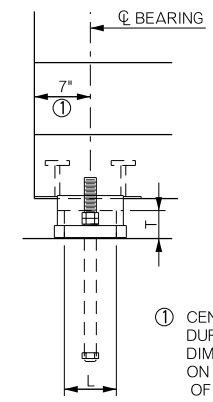
* ALL SPANS HAVE A 2.055% BEVELED SLOPE, EXCEPT SPAN 16 AT 1.94% AND SPAN 17 AT 1.73%.



DETAIL A



END VIEW



SIDE VIEW

① CENTER ANCHOR BOLTS IN SLOTS DURING SETTING OF BEAMS. DIMENSION MAY VARY DEPENDING ON TEMPERATURE AT THE TIME OF BEAM SETTING.

BEARING ASSEMBLY DETAILS

TYPE IV P.C. BEAM BEARING SCHEDULE				
SPAN	60 DUROMETER ELASTOMERIC BEARING PAD			
	SIZE (T x L x W)	COVER LAYER ②	INNER LAYER	LAMINATE LAYER
75'	3 5/8" x 6 1/2" x 2'-2"	2 - 1/4"	6 - 3/8"	7 - 1/8"
80'	3 5/8" x 6 1/2" x 2'-2"	2 - 1/4"	6 - 3/8"	7 - 1/8"
100'	3 5/8" x 6 1/2" x 2'-2"	2 - 1/4"	6 - 3/8"	7 - 1/8"
115'	3 5/8" x 6 1/2" x 2'-2"	2 - 1/4"	6 - 3/8"	7 - 1/8"

② BONDING TO ANCHOR PLATE NOT REQUIRED

BEARING ASSEMBLY NOTES:

PROVIDE STRUCTURAL STEEL FOR ANCHOR PLATES AND BUILT-UP CONTACT ANGLES IN ACCORDANCE WITH ASTM A240 (AUSTENITIC STAINLESS STEEL, TYPE 316, CHARPY V-NOTCH TESTING NOT REQUIRED). FOR ANCHOR BOLTS, PROVIDE CONTINUOUSLY THREADED BARS IN ACCORDANCE WITH ASTM A320, CLASS 2, GRADE B8M (AUSTENITIC STAINLESS STEEL, TYPE 316, CHARPY V-NOTCH TESTING NOT REQUIRED). USE AUSTENITIC STAINLESS STEEL NUTS AND WASHERS CONFORMING TO ASTM A194, GRADE 8M AND ASTM A320, RESPECTIVELY. PERFORM ALL WELDING CONSISTENT WITH PROCEDURES FOR STAINLESS STEEL.

BRIDGE "A" SH-33 OVER COTTONWOOD CREEK		LOGAN COUNTY		Design	GT	11/15
DETAILS OF TYPE IV P.C. BEAM BEARING ASSEMBLIES				Detail	MAP	8/15
				Check	TT	7/16
STATE OF OKLAHOMA				Squad:	PEARSON	
DEPARTMENT OF TRANSPORTATION				Engr.:	HERNANDEZ	
JOB/PIECE NO. 21860(04)		SHEET NO. B052				